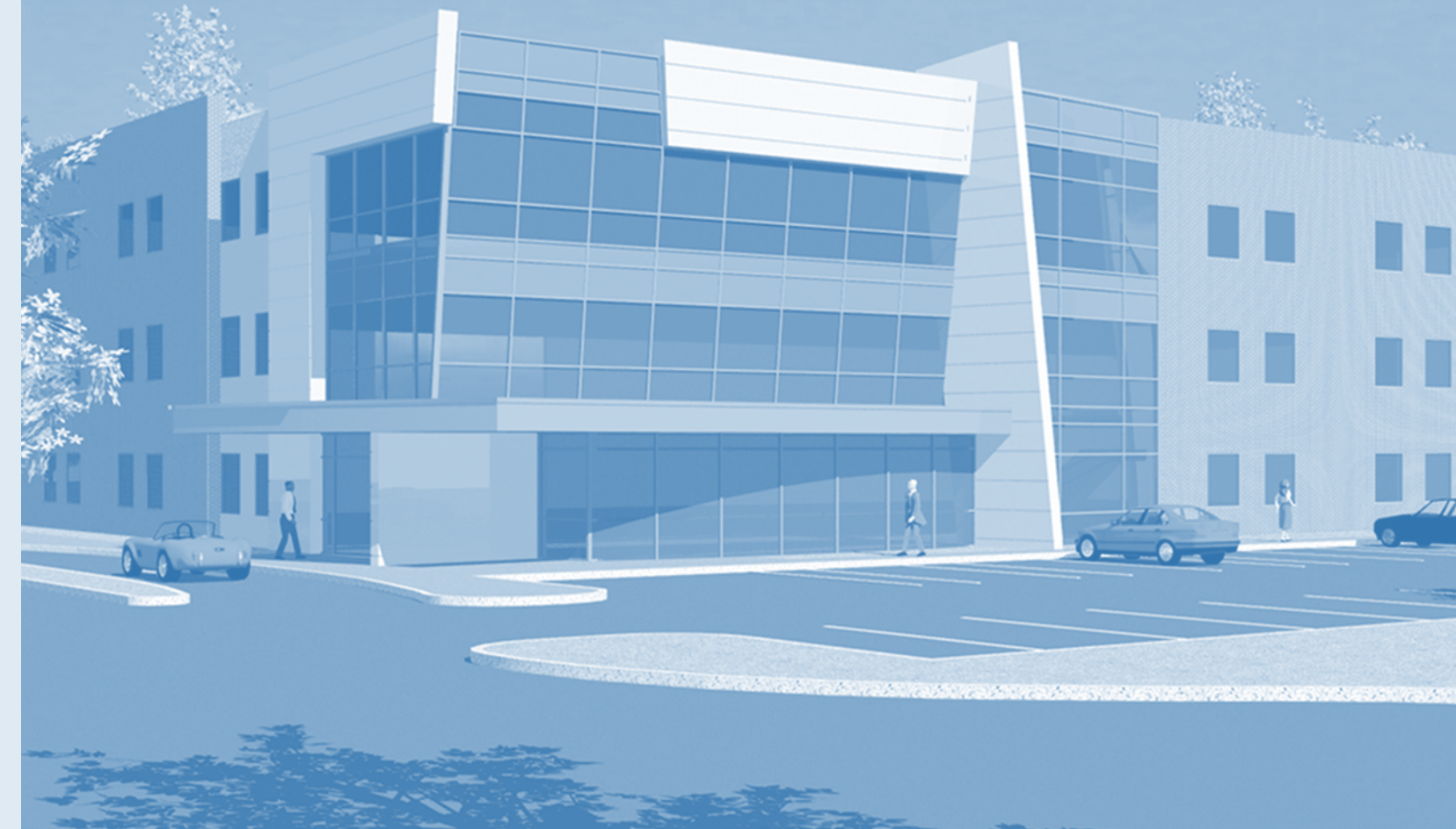


**The Following Healthcare Professionals
are Located in Overlook Medical Park**

- Associated Radiologists P.A. (603) 883-4636
Bedford Commons OB-GYN..... (603) 668-8400
Concord Orthopaedics Professional Association (603) 426-5222
Derry Imaging Center (603) 537-1363
Derry Medical Center (603) 537-1300
Derry Neurological Associates..... (603) 434-3525
Derry Sports & Rehab, L.L.C. (603) 437-3338
Brian Fradette, D.P.M., F.A.C.F.A.S.
& Victor Quijano Jr., D.M.P., Ph.D. (603) 432-2508
Granite State Gastrointestinal Consultants, P.L.L.C. (603) 432-8802
John Kemp, M.D. – Allergy/Immunology..... (603) 216-0400
New England Heart Institute (603) 669-0413
Northeast Urologic Surgery, P.C. (603) 432-9564
Nutfield Surgical Associates, P.C. (603) 434-7444
Parkland Center for Oncology & Hematology (603) 537-2060
Quest Diagnostics (603) 437-3870
Andrea Schneebaum, M.D. – Rheumatology (603) 216-0400
Southern New Hampshire Internal Medicine Associates, P.C. (603) 216-0400
Spindel Eye Associates, P.C. (603) 434-4193
Women’s Health Associates of Derry..... (603) 421-2526
+ Wayne White, M.D., F.A.C.O.G.
+ Thomas Zarka, M.D., F.A.C.O.G.

Q: 1K/0609

Welcome to
Overlook Medical Park



A Directory of Our Healthcare Professionals

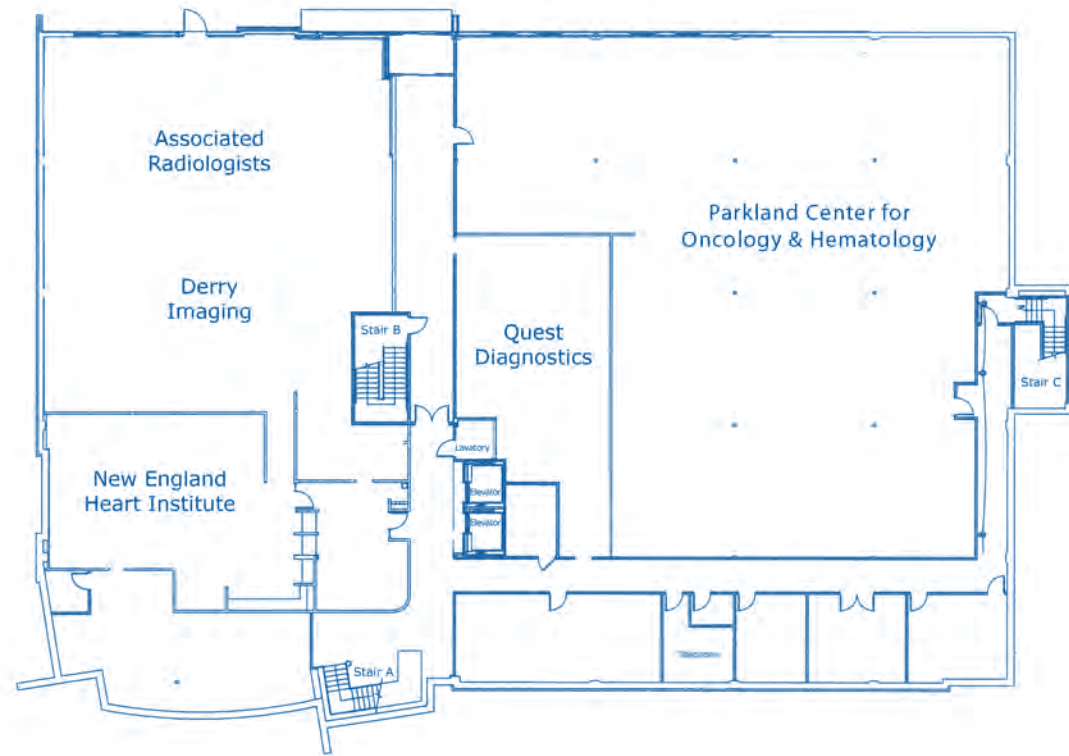


OVERLOOK MEDICAL PARK

6 Tsienneto Road • Derry, NH 03038

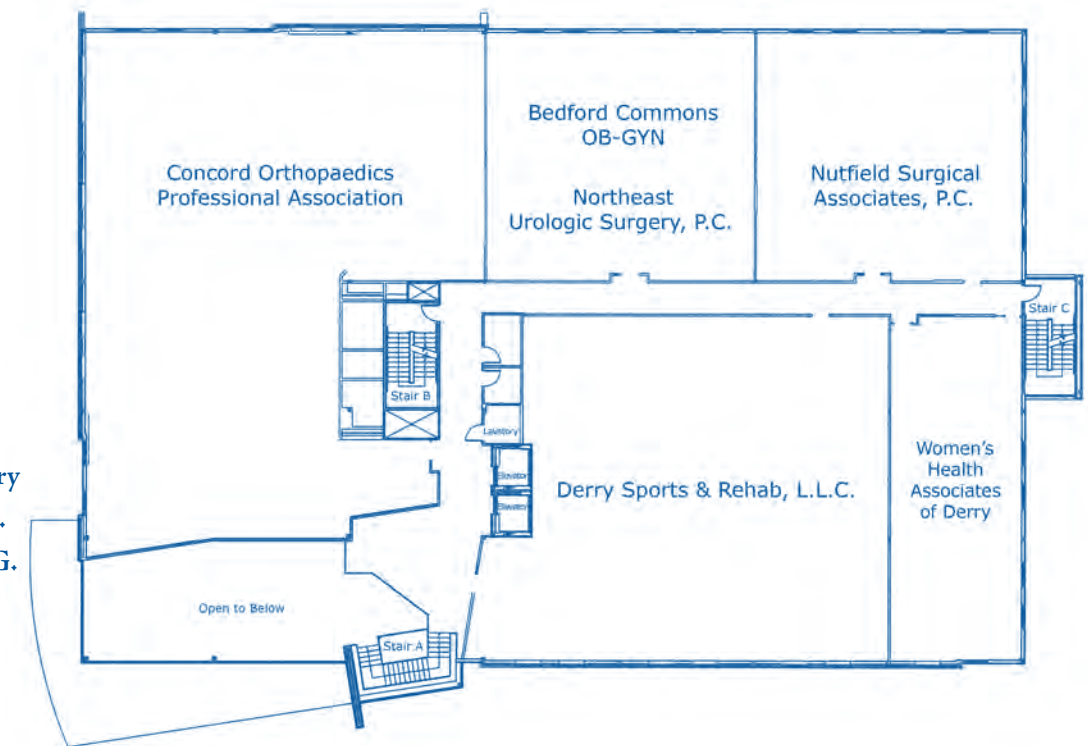
Lower Level

- Associated Radiologists P.A.
- Derry Imaging Center
- New England Heart Institute
- Parkland Center for Oncology & Hematology
- Quest Diagnostics



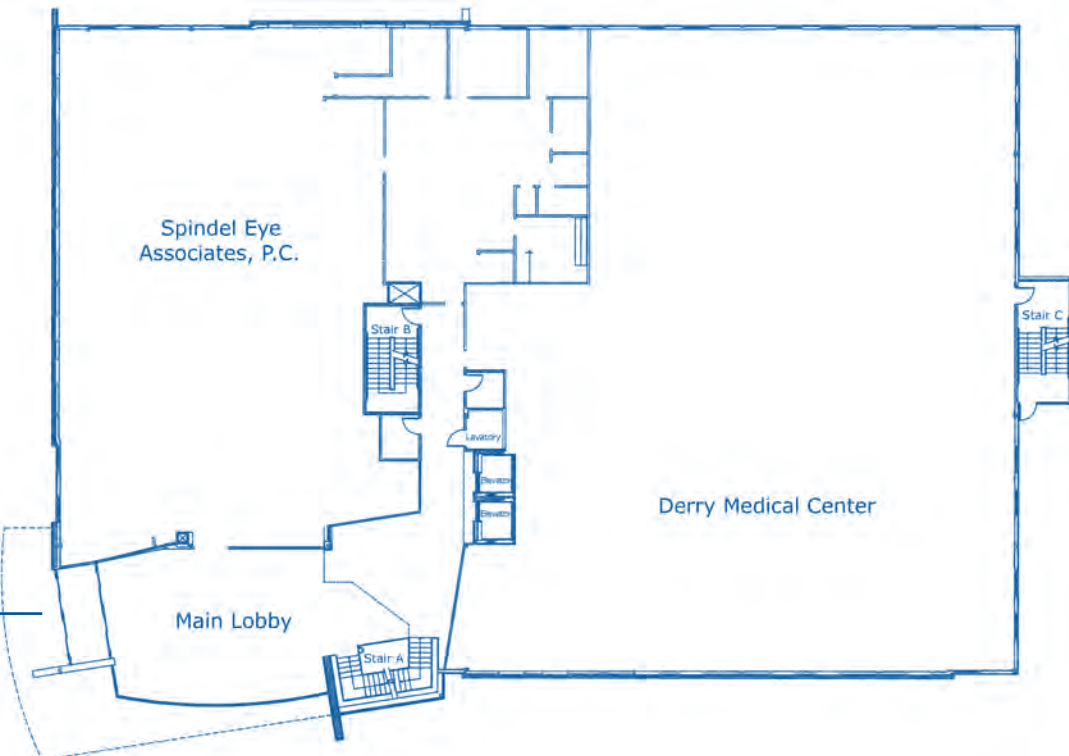
Second Floor

- Bedford Commons OB-GYN
- Concord Orthopaedics Professional Association
- Derry Sports & Rehab, L.L.C.
- Northeast Urologic Surgery, P.C.
- Nutfield Surgical Associates, P.C.
- Women's Health Associates of Derry
 - ♦ Wayne White, M.D., F.A.C.O.G.
 - ♦ Thomas Zarka, M.D., F.A.C.O.G.



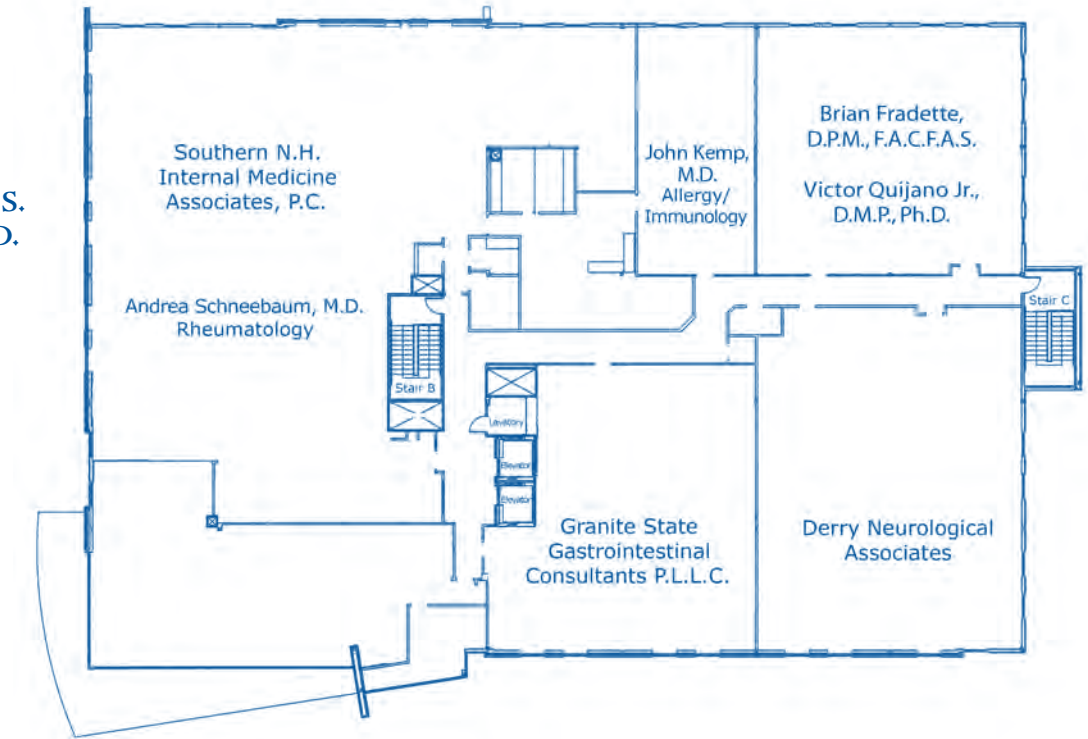
First Floor

- Derry Medical Center
- Spindel Eye Associates



Third Floor

- Derry Neurological Associates
- Brian Fradette, D.P.M., F.A.C.F.A.S. & Victor Quijano Jr., D.M.P., Ph.D.
- Granite State Gastrointestinal Consultants, P.L.L.C.
- John Kemp, M.D., Allergy/Immunology
- Southern New Hampshire Internal Medicine Associates, P.C.
- Andrea Schneebaum, M.D., Rheumatology



A New Outlook. A New Location.



OVERLOOK MEDICAL PARK

6 Tsienneto Road • Derry, NH 03038